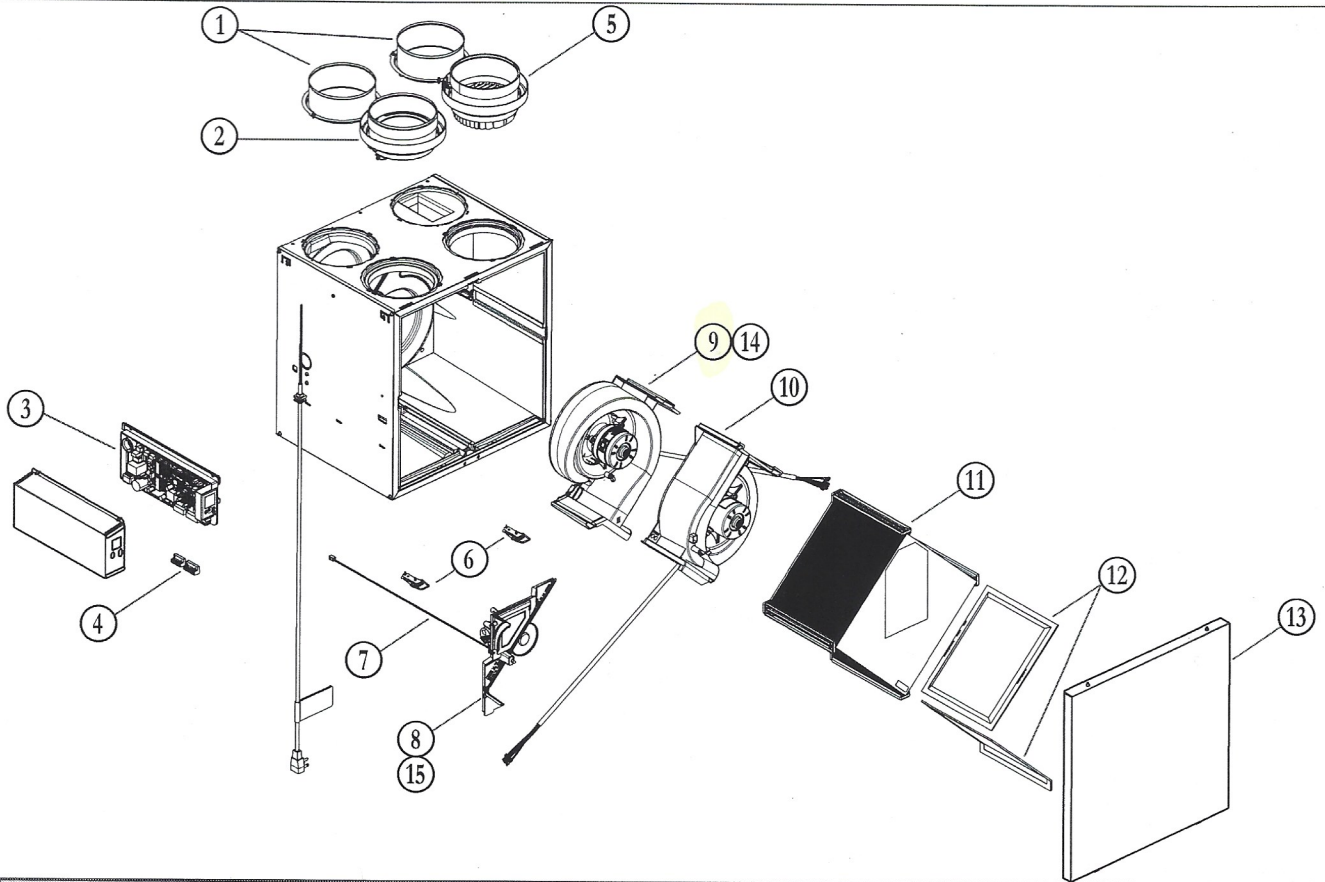


## 7. SERVICE PARTS



VL0096

ITEM	DESCRIPTION	PART NUMBER	V110H65RT	V110H65RS*	V130H65RT	V130H65RS*	V130E65RT	V130E65RS*	V130H80RT	V160H65RT	V160H65RS*	V160E65RT*	V160E65RS*	V160H75RT*	V160H75RS	V160E75RT	V160E75RS*	V160H80RT	V150H75NT	V150H75NS	V150E75NT	V150E75NS	
			1	6" port warm side	SV66139								2		2		2		2		2		
	5" port warm side	SV66140	2	2	2	2													2		2		
2	6" port motorized damper	SV66135								1		1		1		1		1					
	5" port motorized damper	SV66136	1	1	1	1														1		1	
3	Electronic assembly	SV66144**	1	1	1	1	1	1	1	1	1	1	1	1	1	1	1	1	1	1	1	1	1
4	Terminal blocks	SV66145	1	1	1	1	1	1	1	1	1	1	1	1	1	1	1	1	1	1	1	1	1
5	6" exhaust port assembly	SV66137								1		1		1		1		1					
	5" exhaust port assembly	SV66138	1	1	1	1	1													1		1	
6	Door latches and keepers for door	SV61218	1	1	1	1	1	1	1	1	1	1	1	1	1	1	1	1	1	1	1	1	1
7	Thermistor	SV66134	1	1	1	1	1	1	1	1	1	1	1	1	1	1	1	1	1	1	1	1	1
8	Recirculation damper with thermistor	SV66148	1	1	1	1	1	1	1	1	1	1	1	1	1	1	1	1	1				
9	Exhaust blower with damper	SV66142	1	1	1	1	1	1	1	1	1	1	1	1	1	1	1	1	1	1	1	1	1
10	Supply blower assembly	SV66141	1	1	1	1	1	1	1	1	1	1	1	1	1	1	1	1	1	1	1	1	1
11	Core ERV 65 %	SV66113					1					1											
	Core ERV 75 %	SV66114															1						1
	Core HRV 65 %	SV66115	1	1					1														
	Core HRV 75 %	SV66116							1					1					1	1			
12	MERV8 filters kit	SV66133	1	1	1	1	1	1	1	1	1	1	1	1	1	1	1	1	1	1	1	1	1
13	Door	SV66150	1	1	1	1	1	1	1	1	1	1	1	1	1	1	1	1	1	1	1	1	1
14	Exhaust damper	SV66143	1	1	1	1	1	1	1	1	1	1	1	1	1	1	1	1	1	1	1	1	1
15	Separator WE with thermistor	SV66149																			1		1
***	Hardware kit	SV66146	1	1	1	1	1	1	1	1	1	1	1	1	1	1	1	1	1	1	1	1	1
***	Fuse for PCB	SV66147	1	1	1	1	1	1	1	1	1	1	1	1	1	1	1	1	1	1	1	1	1
***	1/2" hose	SV00592	1	1	1	1	1	1	1	1	1	1	1	1	1	1	1	1	1	1	1	1	1

\* Model discontinued

\*\* See next page to get the part number that corresponds to the ventilation unit model.

\*\*\* Not shown