



SERIES

The Fresh Air Appliance Designed to FIT



fantech®
a systemair company



FITS? YOU BET!

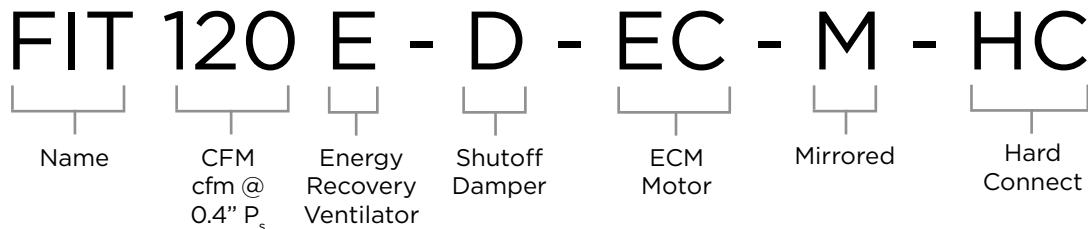
Efficient ventilation in tight spaces

The FIT® Series: Perfect for condos, apartments, and homes without a mechanical room. It's slim, no-drain, and quick to install. Plus, easy maintenance with slide-out components and quick access latches.

- False ceiling applications
- Superior performance
- Energy recovery core
- No drain required
- Ceiling bracket included
- Easy mounting
- Removable quick connect terminals
- Easy & convenient electrical connection
- Quiet operation

What's in the name?

Packed with information, our naming structure is quite easy once you break it down:



Breakdown of the product line

FIT 70E

- Up to 70cfm
- Light-weight, 29 lbs.
- 4" side-duct connection

NEW

FIT 120E
FIT 120E-M
FIT 12-E-HC
FIT 120E-M-HC

- Up to 127cfm
- Light-weight, 34 lbs.
- 5" side-duct connection
- Standard/mirrored versions
- Hard connect option

NEW

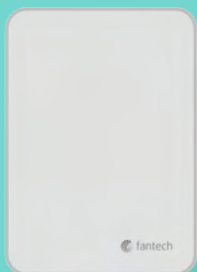
FIT 120E-D
FIT 120E-D-M
FIT 120E-D-HC
FIT 120E-D-M-HC

- Up to 127cfm
- Light-weight, 35 lbs.
- 5" side-duct connection
- Integrated shutoff damper
- Standard/mirrored versions
- Hard connect option

NEW

FIT 120E-D-EC
FIT 120E-D-EC-M
FIT 120E-D-EC-HC
FIT 120E-D-EC-M-HC

- Up to 129 cfm
- Light-weight, 35 lbs.
- 5" side-duct connection
- Integrated shutoff damper
- With ECM fans
- Standard/mirrored versions
- Hard connect option



ECO-Feel®

Auto IAQ Control

Multi-function controller with a Total Volatile Organic Compound (TVOC) sensor that allows the FIT Series to operate around resident's needs.

- Optimizes performance (IAQ, RH and temperature)
- Ventilation at RH level of 45%
- 20 minutes ON/40 minutes OFF per hour (low speed)
- VOC spike results in ventilation rate increase
- Screenless design
- Ideal for multi-family residential projects



FIT[®] SERIES PRODUCT LINE

Model		FIT [®] 70E	FIT [®] 120E FIT 120E-M FIT [®] 120E-HC FIT 120E-M-HC	FIT [®] 120E-D FIT 120E-D-M FIT [®] 120E-D-HC FIT 120E-D-M-HC	FIT [®] 120E-D-EC FIT 120-D-EC-M FIT [®] 120E-D-EC-HC FIT 120-D-EC-M-HC
-------	--	----------------------	--	--	--

Easy to specify
BIM objects & CSI specs
available on product page



Airflow range (Low / High speed)	cfm @ 0.4" P _s	35-70	40-127	40-127	40-129
Duct connection	inch	4	5	5	5
Voltage / Phase	V / ~	120/1	120/1	120/1	120/1
Duct type		Round	Round	Round	Round
Consumed power (Low / High speed)	W	40/58	45/120	45/120	23/147
Fan Efficacy @ 0°C/32°F	cfm/W	1.3	1.1	1.1	2.2
Apparent Sensible Recovery Efficiency @ 0°C/32°F	%	78	81	81	80
Sensible Recovery Efficiency @ 0°C/32°F	%	70	74	74	77
Sensible Recovery Efficacy @ -25°C/-13°F	%	34	61	61	61
Total Recovery Efficiency @ 35°C/95°F	%	40	64	64	70
Max current	A	0.6	1.4	1.4	3
Defrost cycle		Fan Shutdown	Fan Shutdown	Fan Shutdown	Fan Shutdown
Meets ENERGY STAR [®] Requirements		-	-	-	Yes
Depth	inch (mm)	19 5/8 (498)	23 5/32 (588)	23 5/32 (588)	23 5/32 (588)
Width	inch (mm)	21 1/2 (546)	24 5/8 (625)	25 1/16 (636)	25 1/16 (636)
Height	inch (mm)	10 3/8 (264)	10 (254)	10 (254)	10 (254)
Weight	lbs (Kg)	29 (13)	34 (15)	35 (16)	35 (16)

¹Performance at low speed.



1

SLIM PROFILE

The compact design allows for clean installation in tight spaces with minimal footprint.



2

NO DRAIN

The **FIT Series** doesn't require a drain line in order for a quicker, simplified installation.



3

THOUGHTFUL INSTALLATION

The ceiling bracket allows for easy mounting. Rubber gaskets on collars provide an airtight seal, ensuring no air leakage.



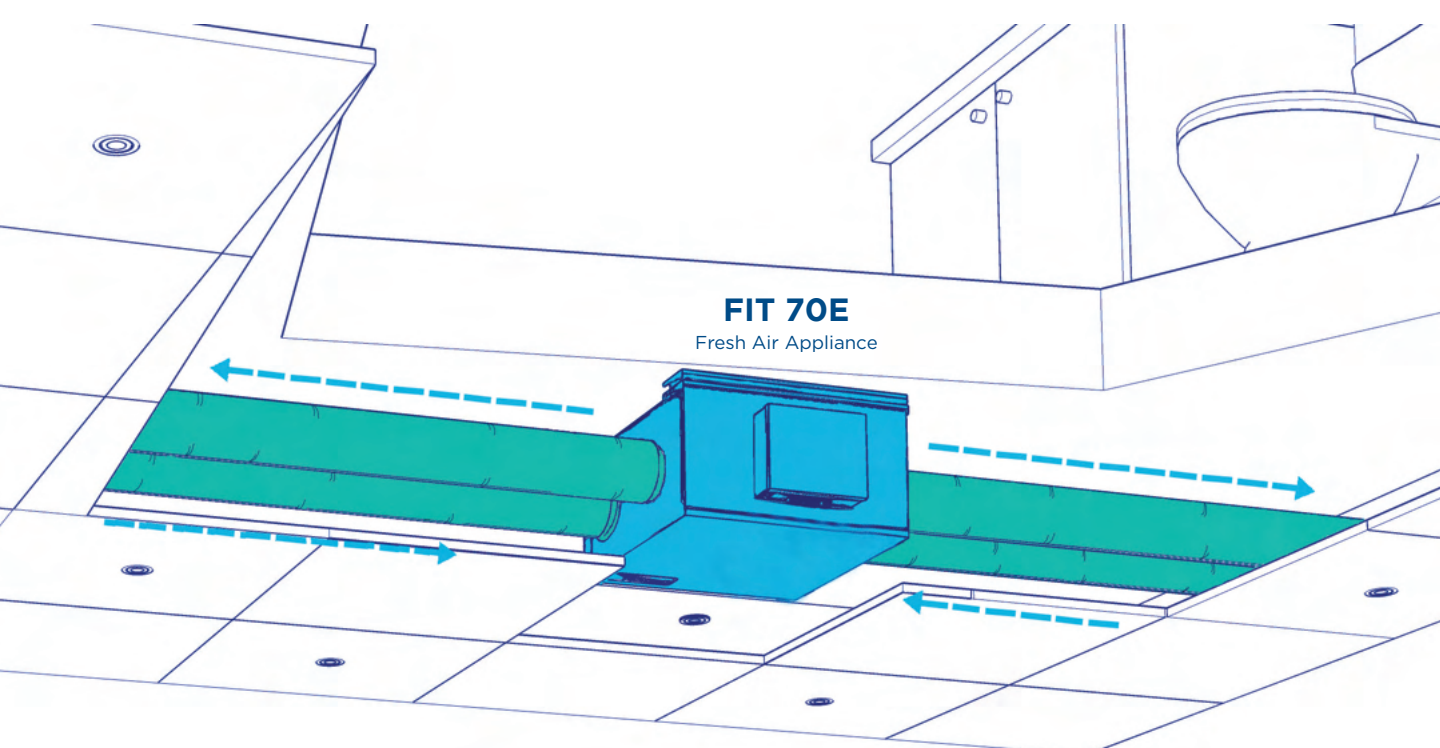
4

ACCESSIBLE ELECTRICAL BOX

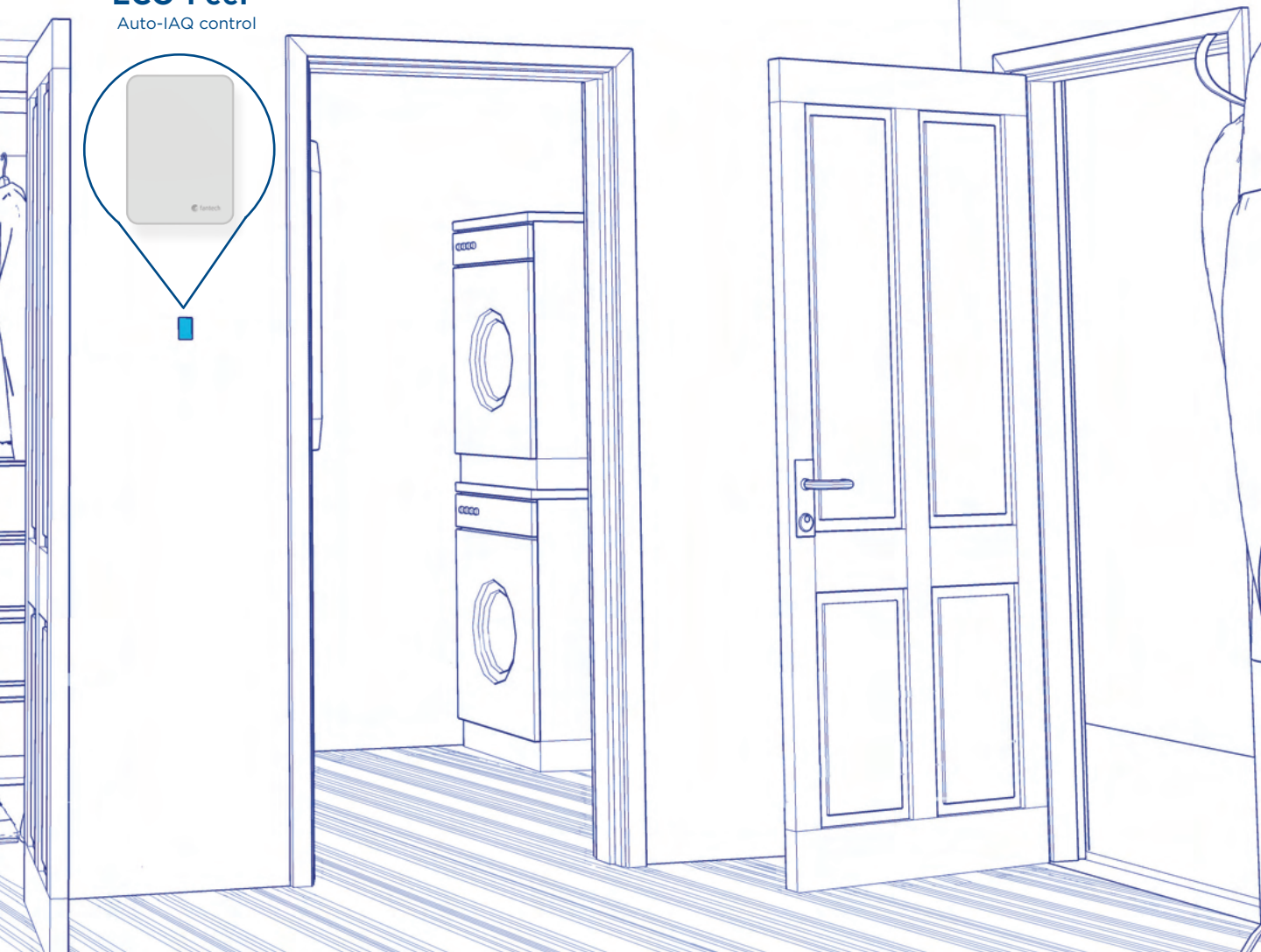
External electrical box simplifies field wiring.

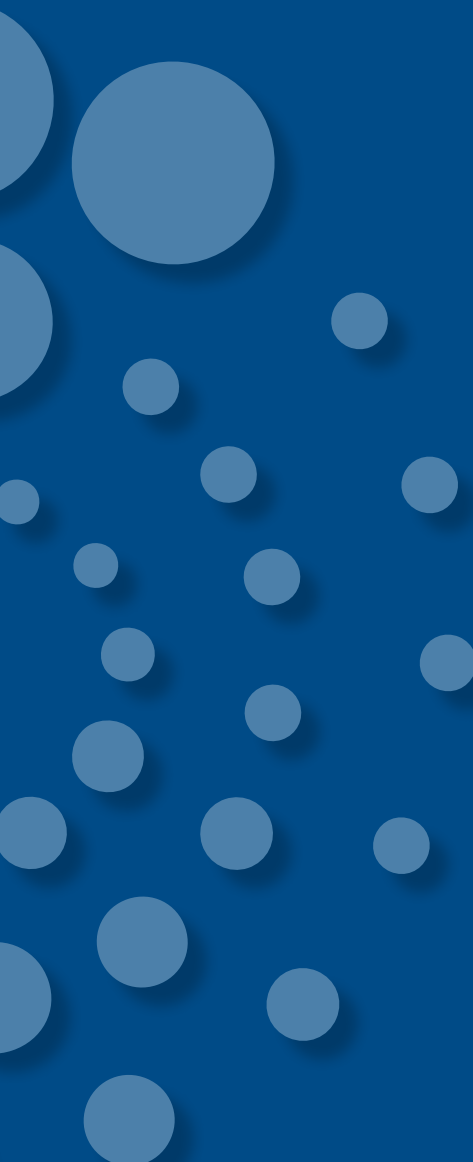


FIT 70E
Fresh Air Appliance



ECO-Feel®
Auto-IAQ control



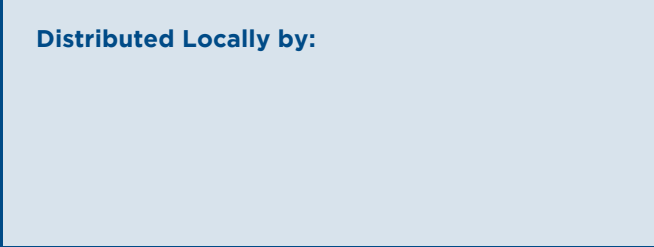


Customer Support:

USA 800.747.1762 • USsupport@fantech.net

CANADA 800.565.3548 • CANADAsupport@fantech.net

Distributed Locally by:



Systemair Inc. reserves the right to modify, at any time and without notice, any or all of its products' features, designs, components and specifications to maintain their technological leadership position. The application rendering presented in this brochure is for a visual presentation purpose only. Please, contact a professional for technical guidance.

Zephyr Creative • February 2024 • E1993