

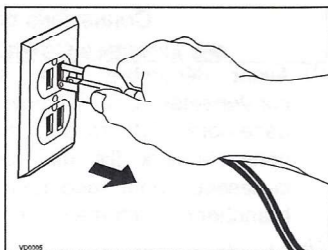
INSTRUCTION SHEET

SUBJECT: TRANSFORMER REPLACEMENT (PART NO. 18302)

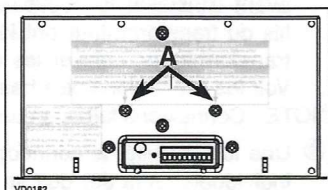
⚠ WARNING

It is recommended to wear safety glasses and gloves while performing these instructions.

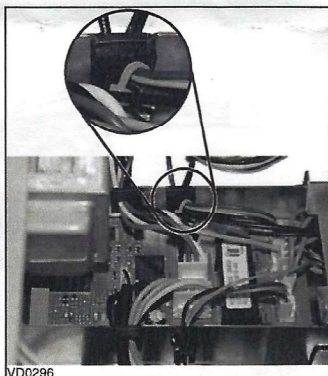
- 1 Turn off and unplug the unit.



- 2 Using a Robertson no. 2 screwdriver, remove both electrical compartment retaining screws (A) and set aside. Slide out the electrical compartment.



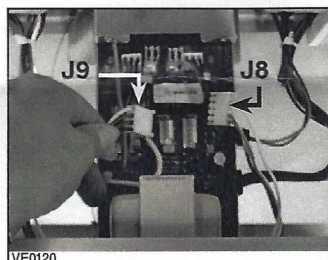
- 3 Some units have a tie wrap attaching one capacitor wire with wire harness behind one left grommet. Cut off this tie wrap using cutting pliers.



⚠ WARNING

Take care not to damage wires while using cutting pliers.

- 4 Unplug both transformer wire connectors from J9 and J8 on the electronic board.



NOTE: Some units have one capacitor wire connected to BLACK transformer wire, and the other capacitor wire connected (or not) to one wire of J9 transformer connector harness. If present, disconnect the capacitor from the defective transformer.

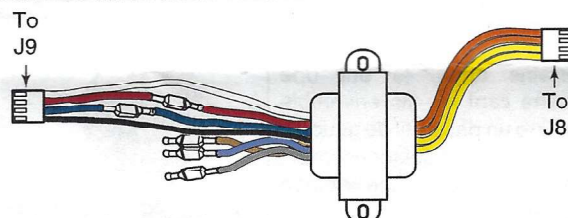
- 5 On the inner face of the electrical compartment cover, cut off both tie wraps (B).



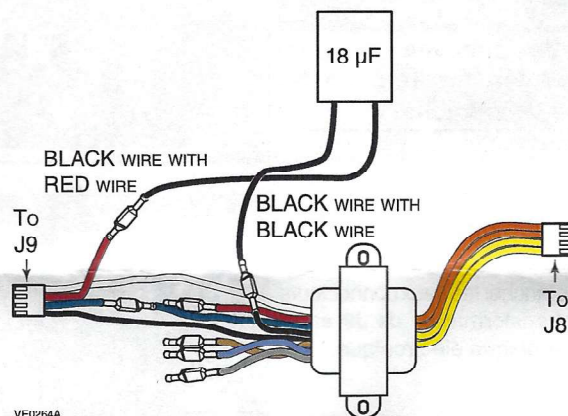
CONSTRUCTO 1.0 AND 60H UNITS ONLY TRANSFORMER CONNECTIONS

- 1 Before December 2012, the units have no capacitor connected to transformer, but starting December 2012, a 18 μ F capacitor is connected to transformer. Refer to illustrations below to find out which version the unit is and perform the right connection for the capacitor (if present).
 - 2 In order to keep the same fan motor speed settings, before installing the new transformer, check for transformer wire harness to have the same tap connections than the old transformer. Leave caps on unused taps. See following illustrations.
- NOTE: Factory set connection shown.
- 3 When installed, the wire harness without taps (to J8) should be on right side of the transformer. See following illustrations.

BEFORE DECEMBER 2012 VERSION



STARTING DECEMBER 2012 VERSION

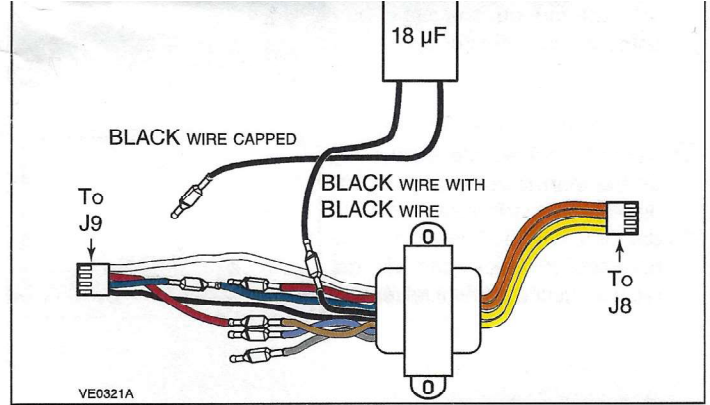


CONSTRUCTO 1.2 ERV AND 60H + ERV UNITS ONLY TRANSFORMER CONNECTIONS

- 1 In order to keep the same fan motor speed settings, before installing the new transformer, check for transformer wire harness to have the same tap connections than the old transformer. Leave caps on unused taps. See following illustrations.
- NOTE: Factory set connection shown.
- 2 When installed, the wire harness without taps (to J8) should be on right side of the transformer. See following illustration

VD0188

-



-
- VD0188

- 06168 rev. 06



7 || 7 2 3 7 1 || 0 8 6 8 3 || || 8

3 Certains appareils ont une